



BASEMENT - POWER DEMOLITION PLAN

$$1/8" = 1'-0"$$

04



BASEMENT - LIGHTING DEMOLITION PLAN

$$1/8'' = 1'-0''$$

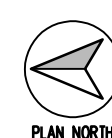
02



BASEMENT - POWER RENOVATION PLAN

$$1/8'' = 1'-0''$$

03



## BASEMENT - LIGHTING RENOVATION PLAN

$$1/8'' = 1'-0''$$

01

GENERAL NOTES
---------------

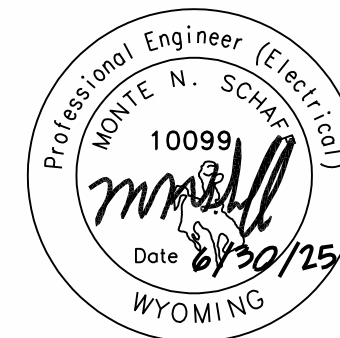
1. SEE SPECIFICATIONS FOR MATERIALS AND METHODS.
2. ELECTRICAL INSTALLATIONS SHALL COMPLY WITH CURRENT ADOPTED NEC, STATE, AND LOCAL CODES.
3. CONTRACTORS ARE TO EXAMINE THE SITE AND DOCUMENTS OF OTHER TRADES, AND BECOME FAMILIAR WITH THE CHARACTER OF THE WORK.
4. IN AREAS LABELED FOR DEMOLITION ON ARCHITECTURAL PLANS, EC TO PROVIDE ELECTRICAL ASSISTANCE TO REMOVE, DISCONNECT, OR REPAIR TO MAINTAIN SAFE CONDITIONS AS NEEDED. COORDINATE WITH GC AND MC.
5. IN THE PROCESS OF DEMOLITION, IF ANY HAZARDOUS MATERIALS ARE UNCOVERED, BRING IT TO THE ATTENTION OF THE GC IMMEDIATELY. DO NOT DISPOSE OF HAZARDOUS MATERIALS IMPROPERLY.
6. ALL PENETRATIONS FOR RACEWAY AND WIRE WHICH ARE FURNISHED AND INSTALLED BY THE EC, THAT INCLUDE FLOORS, PARTITIONS, WALLS, CEILING WALLS, AND FULL HEIGHT PARTITIONS (INCLUDING CHASES) SHALL BE SEaled WITH A SYSTEM SPECIFICALLY UL APPROVED FOR THE APPLICATION, TO MAINTAIN FIRE RATING.
7. LOCATION AND TYPE OF EXISTING ELECTRICAL EQUIPMENT DEVICES, SUCH AS FIXTURES, SWITCHES ETC. REPRESENT "BEST UNDERSTANDING" OF EXISTING LOCATIONS AND MAKE SURE THE DRAWINGS FULLY REFLECT ALL EXISTING CONDITIONS. CONTRACTOR SHALL BE RESPONSIBLE FOR SITE VERIFYING LOCATIONS AND TYPES PRIOR TO PREPARING AND SUBMITTING BIDS.
8. ALL EXISTING PANELBOARDS SHOWN TO REMAIN CLEAN BREAKERS, SWITCHES AND CHECK TIGHTNESS OF TERMINALS, CONDUCTORS, AND CIRCUIT BREAKERS OR PROVIDE CLOSURE PLATES WITH POSITIVE LOCKING MECHANISM AND NAMEPLATES WITH NAMES SHOWN ON THE DRAWINGS.
9. EXISTING ELECTRICAL DEVICES ARE TO REMAIN UNLESS NOTED OTHERWISE. WHERE DEMOLITION OF CERTAIN ELECTRICAL DEVICES DISRUPTS ACCESS TO ACTIVE REMAINING DEVICES THE CONTRACTOR SHALL REMOVE AND RECONSTRUCT EQUIPMENT TO THE REMAINING DEVICES AS REQUIRED.
10. DEVICES SHOWN ON DEMO PLANS IN LIGHT PEN AND DASHED SHALL BE DISCONNECTED, REMOVED, AND REWIRING TO BE DISPOSED OF IN ACCORDANCE TO THEIR SPECIFIC NOTE. OWNER SHALL HAVE FIRST REFUSAL TO REUSE OR REWIRE. REWIRING AND REWIRING MAY BE REUSED IF POSSIBLE, OTHERWISE REMOVE COMPLETE.
11. BOLDED DEVICES SHOWN ON DEMO PLANS ARE EXISTING AND SHALL REMAIN.
12. ALTERNATE #6: ALL ELECTRICAL WORK INDICATED ON THE DRAWINGS.

## DEMOLITION NOTES

- 1 EXISTING POTTER PIA-60 FIRE ALARM CONTROL PANEL IS TO REMAIN.
- 2 EXISTING LIGHT FIXTURES IN ROOM NOTED ARE TO BE REMOVED DURING CEILING REDEMPTION AND PROTECTED FROM DAMAGE FOR REINSTALLATION DURING RENOVATION.
- 3 EXISTING LIGHT FIXTURE NOTED IS TO BE REMOVED DURING PREP FOR MECHANICAL EQUIPMENT AND DUCT REDEMPTION AND PROTECTED FROM DAMAGE FOR REINSTALLATION DURING RENOVATION.
- 4 EXISTING LIGHT SWITCH IS TO REMAIN AND BE REUSED. SEE RENOVATION DRAWING FOR NEW SWITCHING.
- 5 EXISTING RECEPTACLE IS TO BE DEMO'D TO ALLOW FOR CONSTRUCTION OF NEW WALK IN REMOVE ABANDONED CONDUIT AND WIRE BACK TO SOURCE.
- 6 EXISTING MECHANICAL EQUIPMENT IS TO BE REMOVED. DISCONNECT EXISTING CIRCUIT AND REUSE FOR NEW EQUIPMENT. SEE RENOVATION DRAWING.
- 7 EXISTING COMBINATION SMOKE/FIRE DAMPER AND SMOKE DETECTOR ARE TO BE REMOVED. EXISTING FIRE ALARM CIRCUIT IS TO BE REUSED FOR NEW COMBINATION DAMPER.

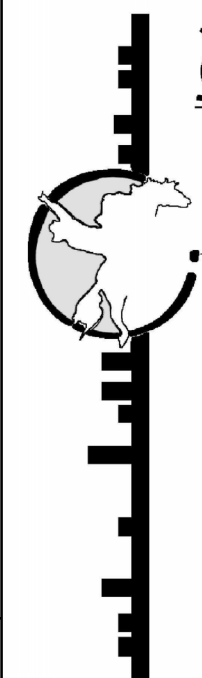
## FLAG NOTES

- 1 EXISTING LIGHT FIXTURES IN ROOM NOTED  
REMOVED DURING CEILING REPLACEMENT ARE  
TO BE REINSTALLED IN SAME LOCATION AND  
RECONNECTED TO EXISTING SWITCHED CIRCUIT.
- 2 EXISTING LIGHT FIXTURE NOTED REMOVED DURING  
CEILING REPAIRS TO BE REINSTALLED IN  
SAME LOCATION AND RECONNECTED TO  
EXISTING SWITCHED CIRCUIT.
- 3 EXISTING LIGHT FIXTURES IN ROOM NOTED  
REMOVED DURING CEILING REPLACEMENT ARE  
TO BE REINSTALLED IN SAME LOCATION AND  
RECONNECTED TO EXISTING CIRCUIT. MODIFY  
SWITCHING AS SHOWN.
- 4 PROVIDE NEW DIMMING SWITCH AND CONNECT AS  
SHOWN. SWITCH SHALL BE OF THE TRIAC/PHASE  
TECHNOLOGY COMPATIBLE WITH LED FIXTURES.  
WALLSTOPPER RH4P30L0R OR ACCEPTABLE EQUAL.
- 5 CONNECT NEW RECEPTACLES SHOWN TO EXISTING  
RECEPTACLE CIRCUIT.
- 6 CONNECT TO SPARE 20/1 BREAKER IN EXISTING  
PANEL "B".
- 7 COMBINATION SMOKE/FIRE PANDUIT. CONNECT TO  
EXISTING FIRE ALARM DEDICATED CIRCUIT AS  
REQUIRED BY CODE. LOCATE SMOKE DETECTORS  
AS NOTED BY MC 607. CONFIRM LOCATION OF  
DEMAND WITH MC.
- 8 EXISTING NEW MECHANICAL EQUIPMENT TO  
CONNECT CIRCUIT FROM DEMO'D EQUIPMENT.  
EXTEND CONDUIT ATTEND



**ENGINEERING**  
DESIGN ASSOCIATES  
1607 CY AVE, STE 303 // CASPER, WY 82604  
307-266-5033 // MAIL@EDAENGINEERING.COM

OLD STONEY REMODEL  
PHASE TWO  
120 NORTH 4TH STREET  
SUNDANCE, WYOMING 82729



Stateline No. 7  
ARCHITECTS  
100 South Center Street  
307.245.5616 fax  
307.245.5617 fax  
© Campus WY  
8.26201  
www.stateline7.com

PROJECT  
16-022/25004

DATE  
06-30-25

DRAWN BY  
KN/MS

DISK ID.

SHEET  
BASEMENT  
ELECTRICAL  
ALTERNATE #6

SHEET

16.10